

Installation Sheet for IP400 - Series : Music Box



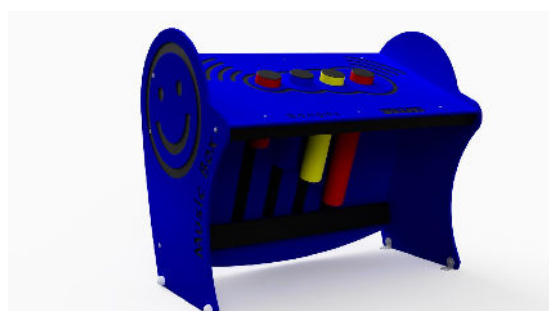
IP400 Xylophone



IP41 Glockenspiel



IP402 Tongue Drums



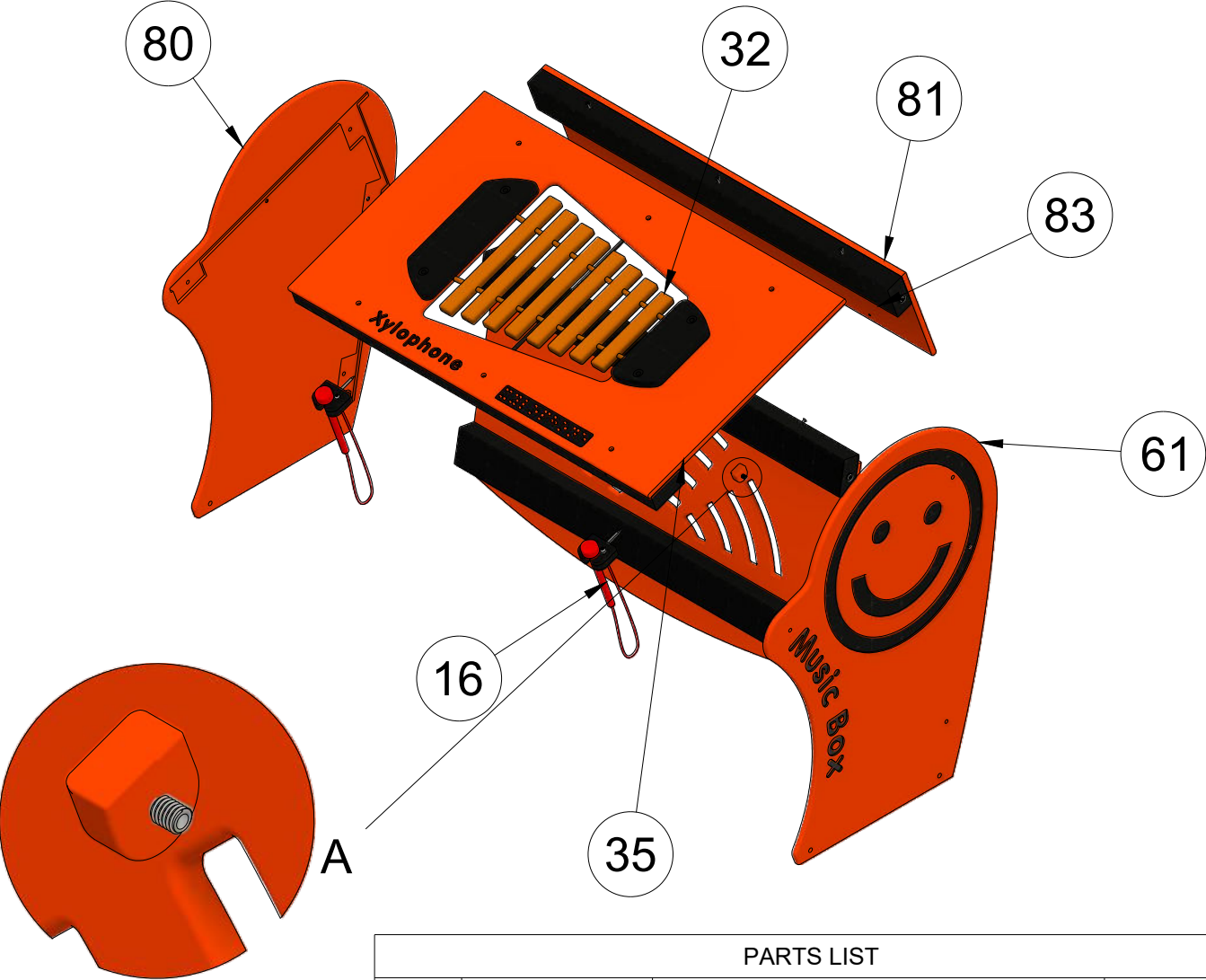
IP403 Bongos

Product Name	Music Box
Product Code	IP400 Series
Document Release Date	02/09/2021
Document Rev	1

Installation Sheet for IP400 - Series : Music Box

EXPLODED ASSEMBLY VIEW

Music Box pre-assembled ready for installation.



Under Table Tab Fixing

PARTS LIST			
ITEM NO	CODE	DESCRIPTION	QTY
16		Music Sticks	2
32	FPL7958-A	Virtuoso Flat Chimes - Low - Front Pannel	1
35	FPL0525-A	Music Box - Support Bar - 1200 x 100 x 50mm	1
61	FPL0522-D	Music Box - RH Panel	1
80	FPL0521-D	Music Box - LH Panel	1
81	FPL0523-A	Music Box - Rear Top Pannel	1
83	FPL0524-C	Top Pannel	1



Installation Sheet for IP400 - Series : Music Box

INSTALLATION OVERVIEW

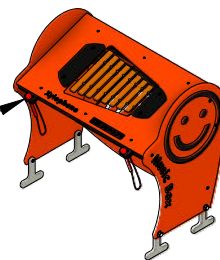
IN GROUND SUPPORT



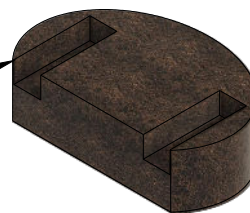
Two people are required for this installation.

Day One - 4 Hour

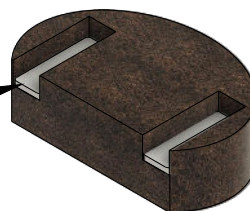
Assemble all four ground anchors on the music box by using the bolts and fixing provided. Ensure all fixings are tight and secure.



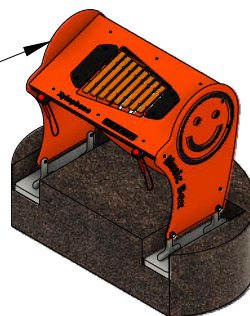
Excavate two troughs 250mm x 713mm x 200mm. More information on page 6.



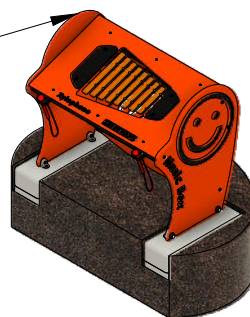
Place a slab or similar hard standing base into the bottom of the excavated hole. This can be crushed stone or gravel. Ensure this is level.



Place the Music Box onto the hard standing base. Ensure the item is level and make adjustments if necessary.



Fill each of the excavated troughs with cement whilst checking the Music Box level is maintained. Cement Volume is 0.026m³.



Check all is level and leave to set.

Check that all bolts and fixings are secure ready for use.



Call us +44(0)131 214 1180

www.inclusiveplay.com

info@inclusiveplay.com

Installation Sheet for IP400 - Series : Music Box

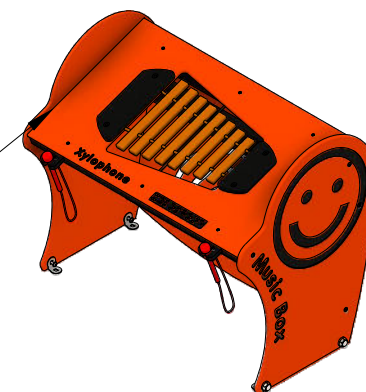
INSTALLATION OVERVIEW

SURFACE MOUNT

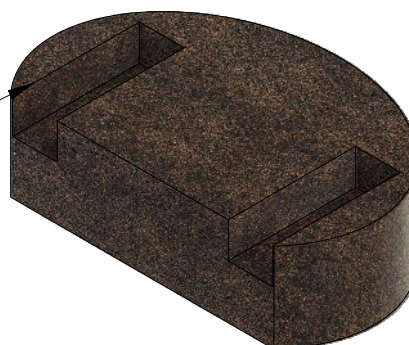
Two people are required for the installation.

Day One - 2 Hours

Assemble all four surface mount on the music box by using the bolts and fixing provided. Ensure all fixings are tight and secure.



Excavate two troughs 250mm x 713mm x 200mm. More information on page 7.



Fill each of the excavated troughs with cement whilst checking the cement is level is maintained.

Cement Volume is 0.035m³.



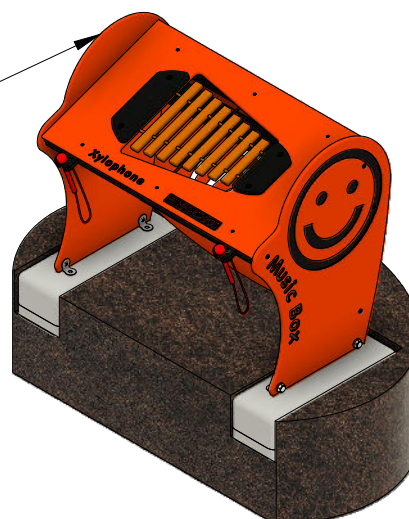
Leave Cement to Set.

Day Two - 1 Hour

When cement is set place the music box and the surface mount on top of the cement and bolt on securely. See page 4



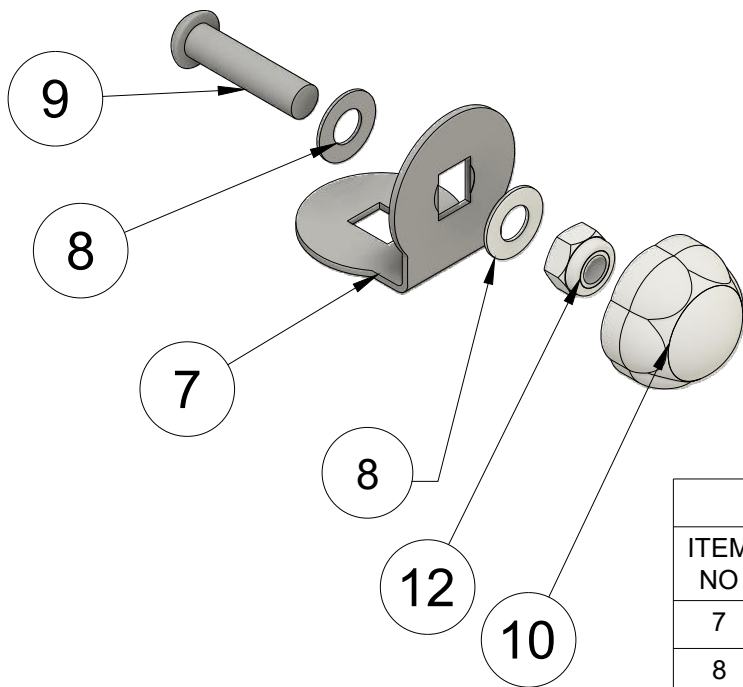
Check that the Music Box is level and secure.



Installation Sheet for IP400 - Series : Music Box

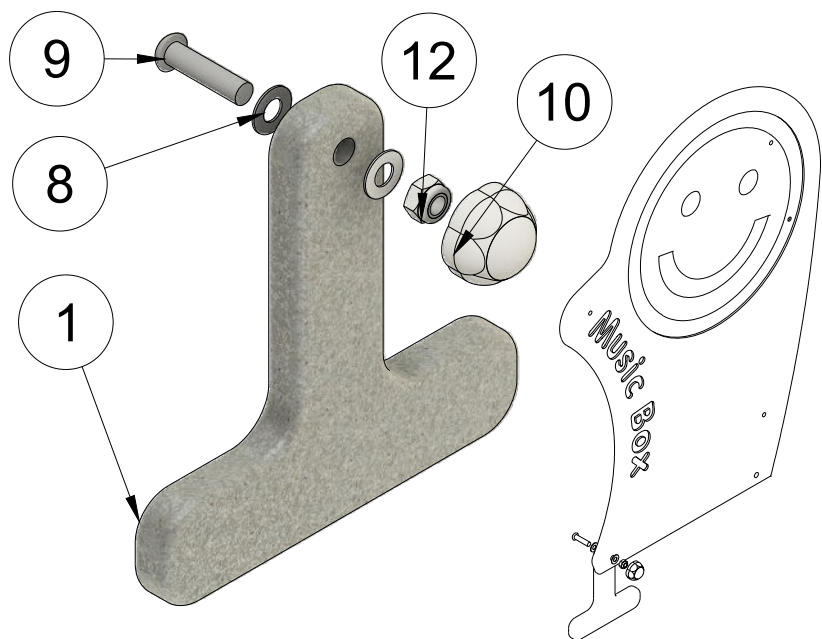
SURFACE MOUNT

Surface Fixing (Anchor Bolt Not Supplied)



PARTS LIST			
ITEM NO	CODE	DESCRIPTION	QTY
7	FME0023-A	90 Degree Bracket	4
8	FSU0031-A	M10 Washer - SS	8
9	FSU003-A	M10 x 40mm Button Head Bolt - SS	4
10	FSU0100-A	M10 Two Piece Security Cap - Flower 9	4
12	FSU0009-A	M10 Nylock Nut - ZP	8

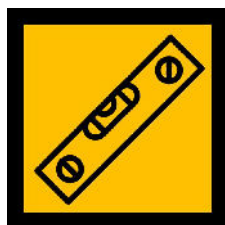
IN GROUND ANCHOR



PARTS LIST			
ITEM NO	CODE	DESCRIPTION	QTY
1	FPL0683 - A	T Foundation Anchor	4

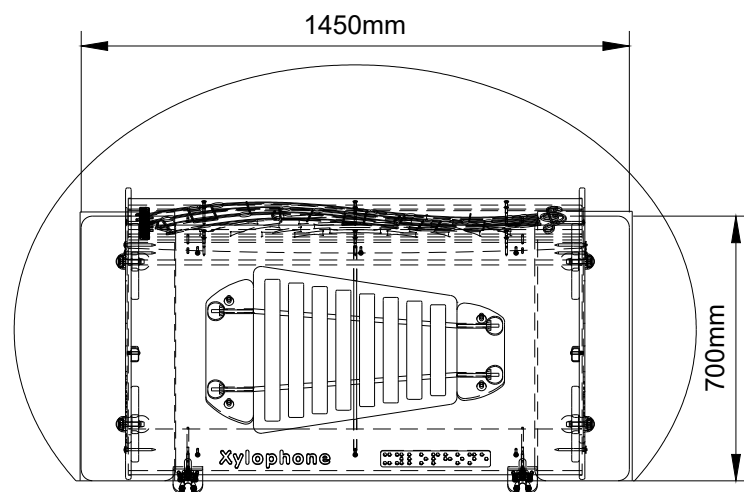
Installation Sheet for IP400 - Series : Music Box

IN GROUND ANCHOR DETAILS

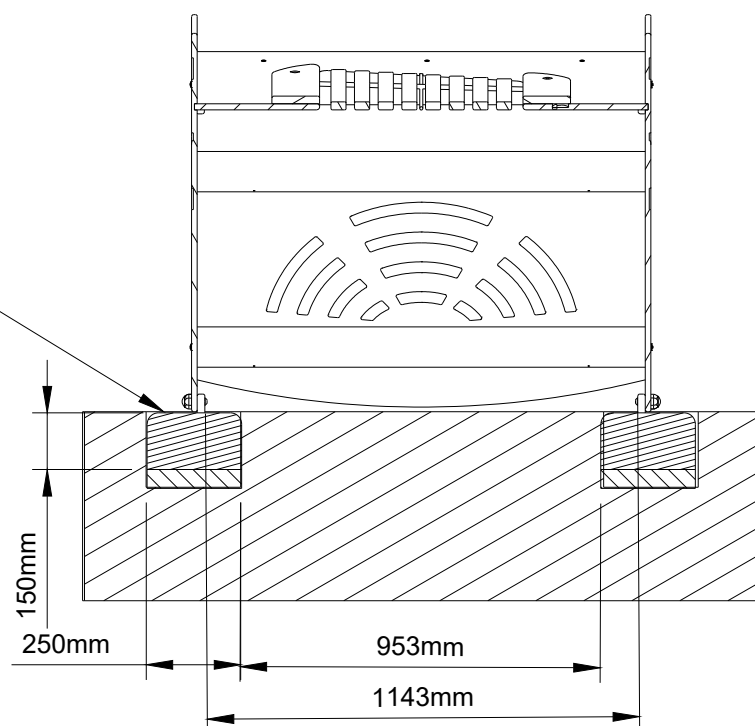
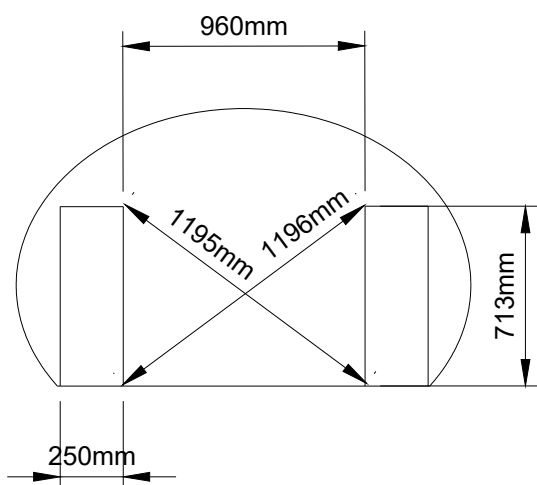


CHECK LEVEL

Use a spirit level : Placing a level base into the ground allows the ground anchor to be placed safely and it will allow the full product to be level.



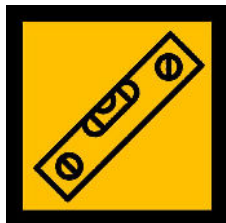
Pour cement into excavated areas there should be 0.02m of cement in each area not covering any vital part like bolts and fixing. There are 2 areas needing cement.



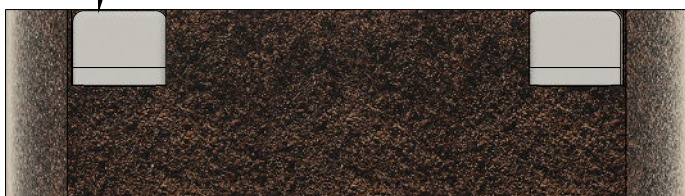
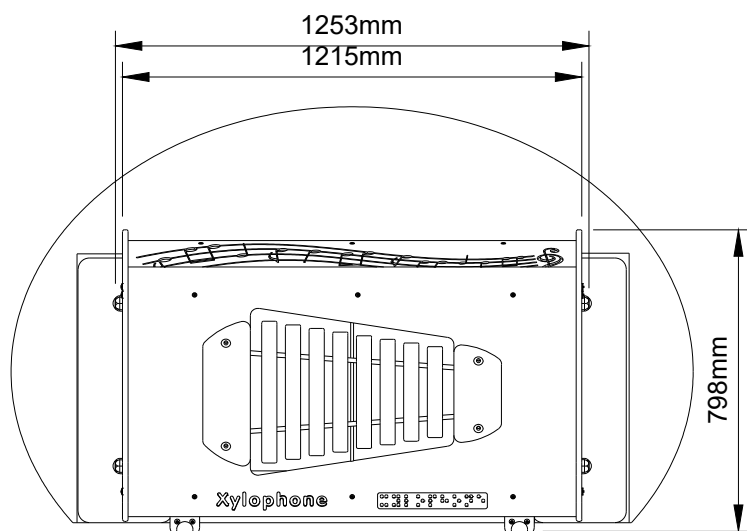
inclusive
play

Installation Sheet for IP400 - Series : Music Box

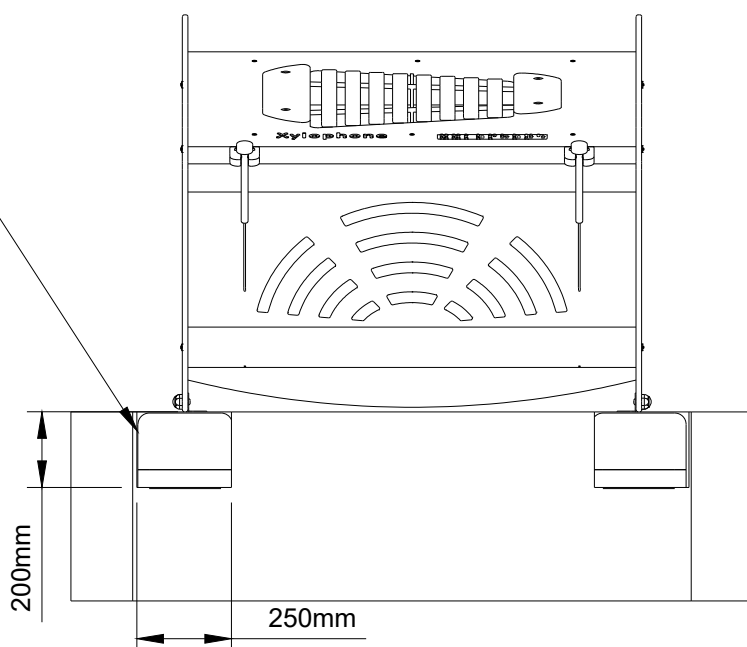
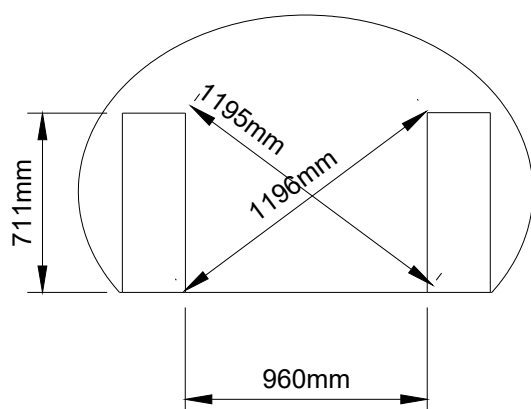
SURFACE MOUNT ANCHOR DETAILS



Use a spirit level : when making sure that the cement foundation is level.

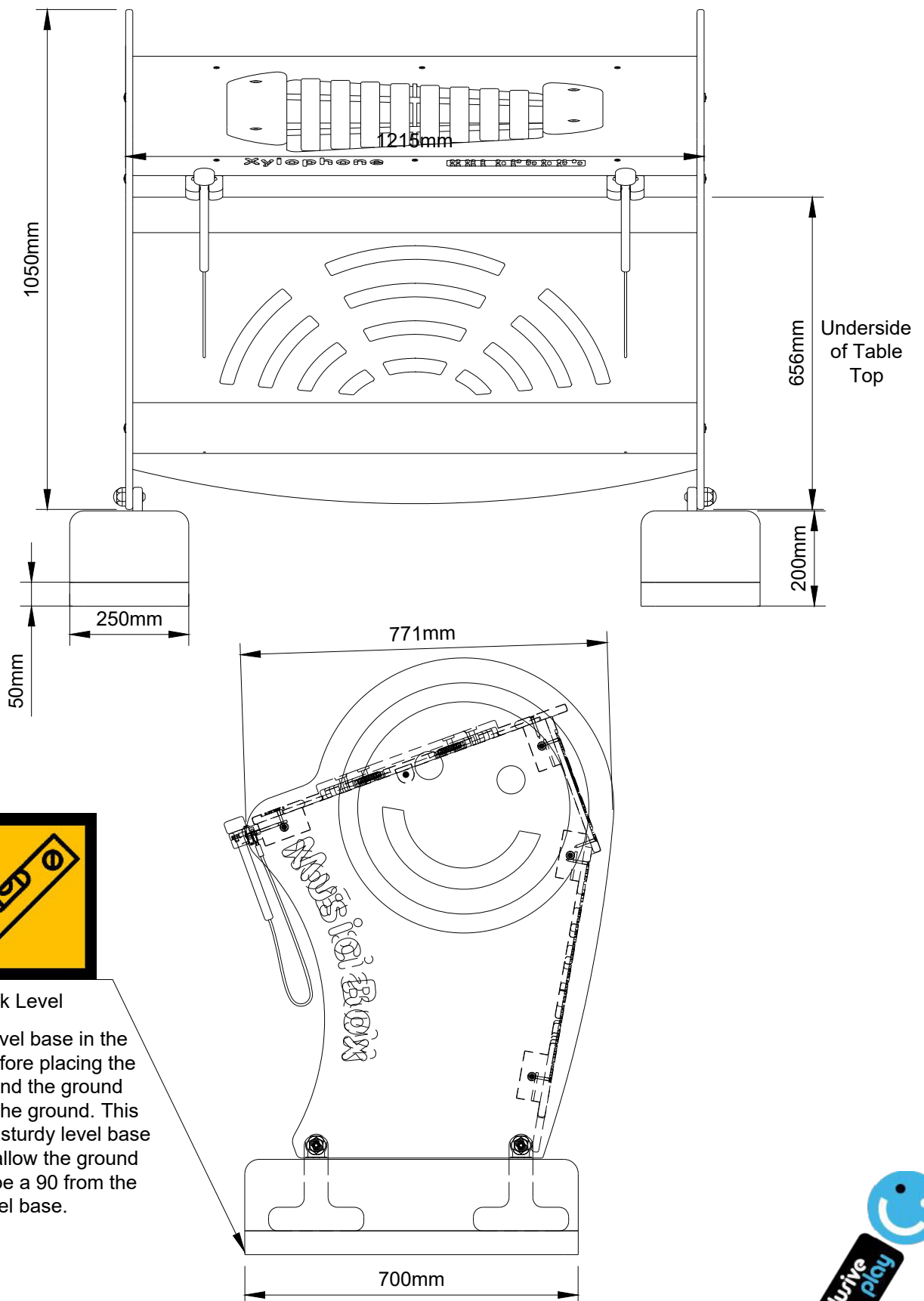


Pour cement into excavated troughs there should be 0.035m³ of cement in each area not covering any vital part like bolts and fixing. There are 2 areas needing cement.



Installation Sheet for IP400 - Series : Music Box

IN GROUND FOUNDATION DETAILS



Call us +44(0)131 214 1180

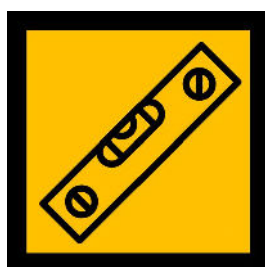
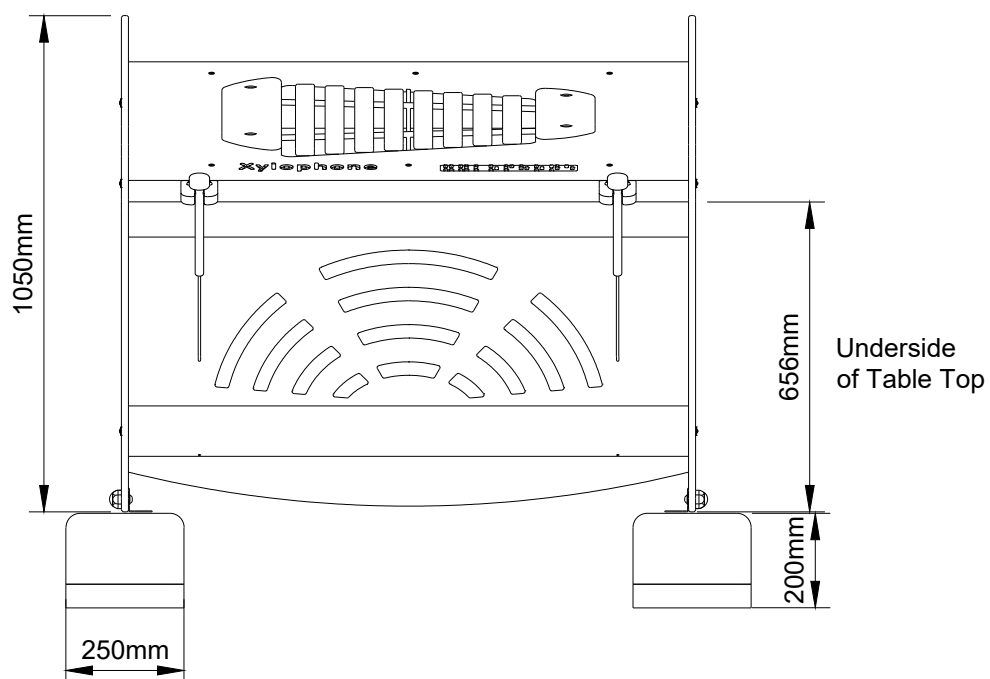
www.inclusiveplay.com

info@inclusiveplay.com

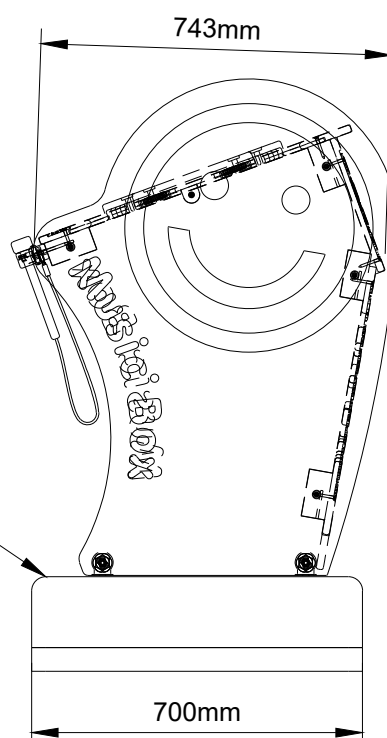


Installation Sheet for IP400 - Series : Music Box

SURFACE MOUNT FOUNDATION DETAILS

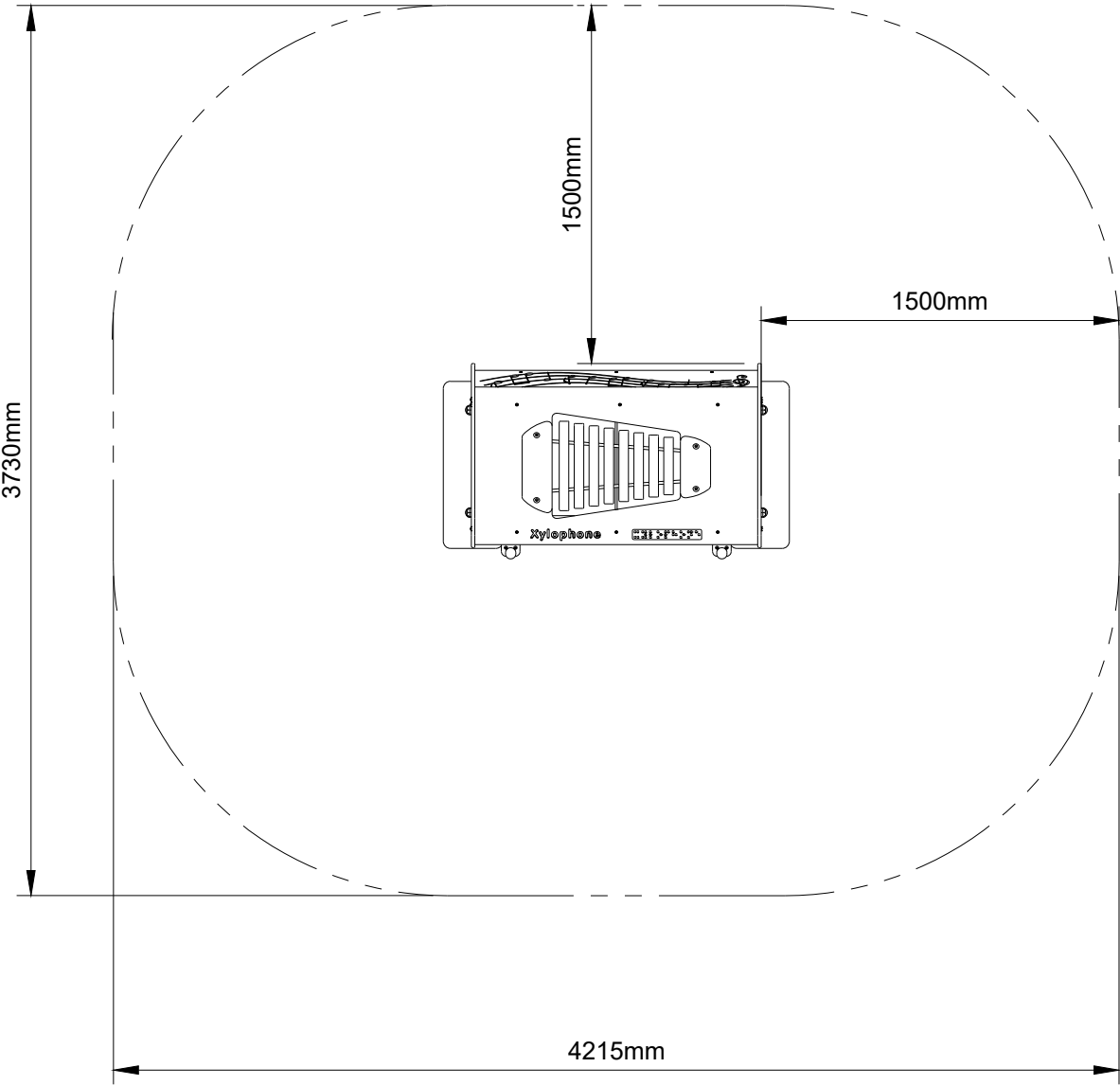


CHECK LEVEL



Installation Sheet for IP400 - Series : Music Box

SAFTY SURFACING DETAIL



Grassmat Qty (mat - 1.5m²)	1 mat
Loosefill (m³)	N/A
Falling Space	N/A
Age Range	3 Years +
Notes	We recommend a minimum 1.5m usage area around the Music Box