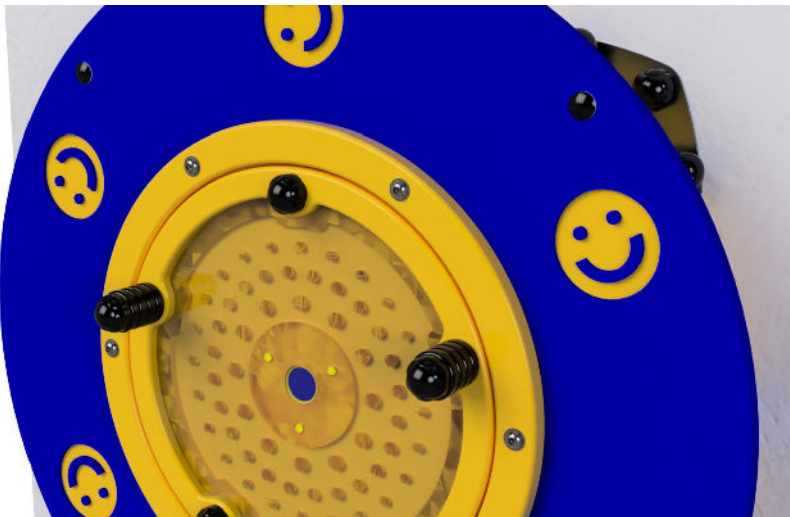


Installation Sheet for IP19 - Microsphere



Product Name	Microsphere
Product Code	IP19
Document Release Date	06/09/2021
Document Rev	1
Total Install Hours	2 Hours

Installation Sheet for IP19 - Microsphere

MICROSPHERE RANGE



Green and Yellow



Blue and Yellow



Green and Beige



Installation Sheet for IP19 - Microsphere

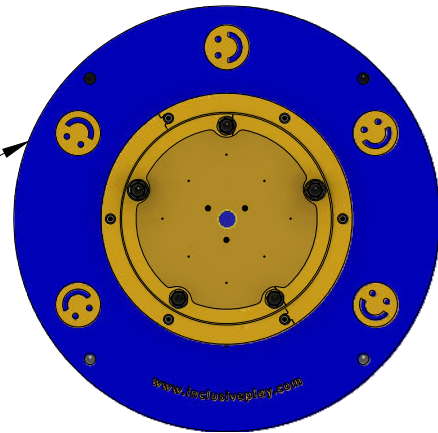
INSTALLATION OVERVIEW



Two people are required for this installation.

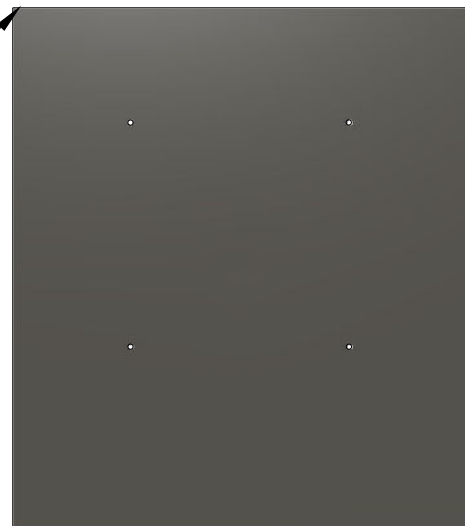
Day One - 2 Hours

Check that all bolts and fixing are secure before installation.



Drill 4 x 14mm holes, which will allow the Microsphere to be securely in place. Make sure the surface is flat.

See page 4 with more information.



Place the Microsphere on to the mounted surface. Ensure there are no sharp corners of the cement exposed. Ensure unit functions without breaking away from the installed foundations.



Check that the product is level and at the ideal height for the user.



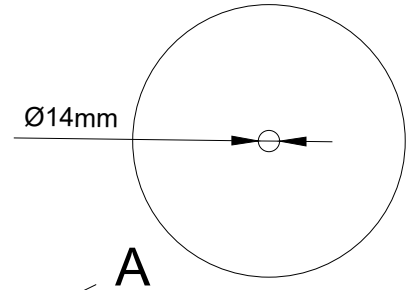
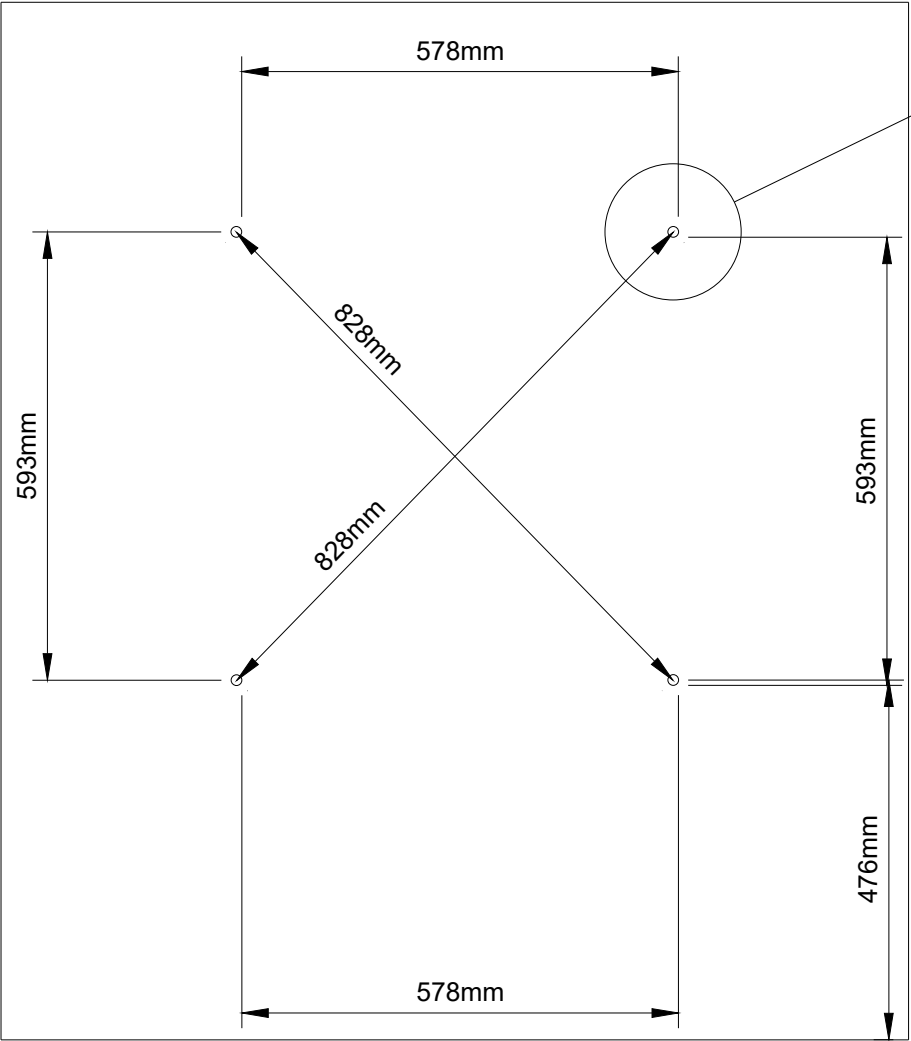
Call us +44(0)131 214 1180

www.inclusiveplay.com

info@inclusiveplay.com

Installation Sheet for IP19 - Microsphere

MOUNTING DETAIL

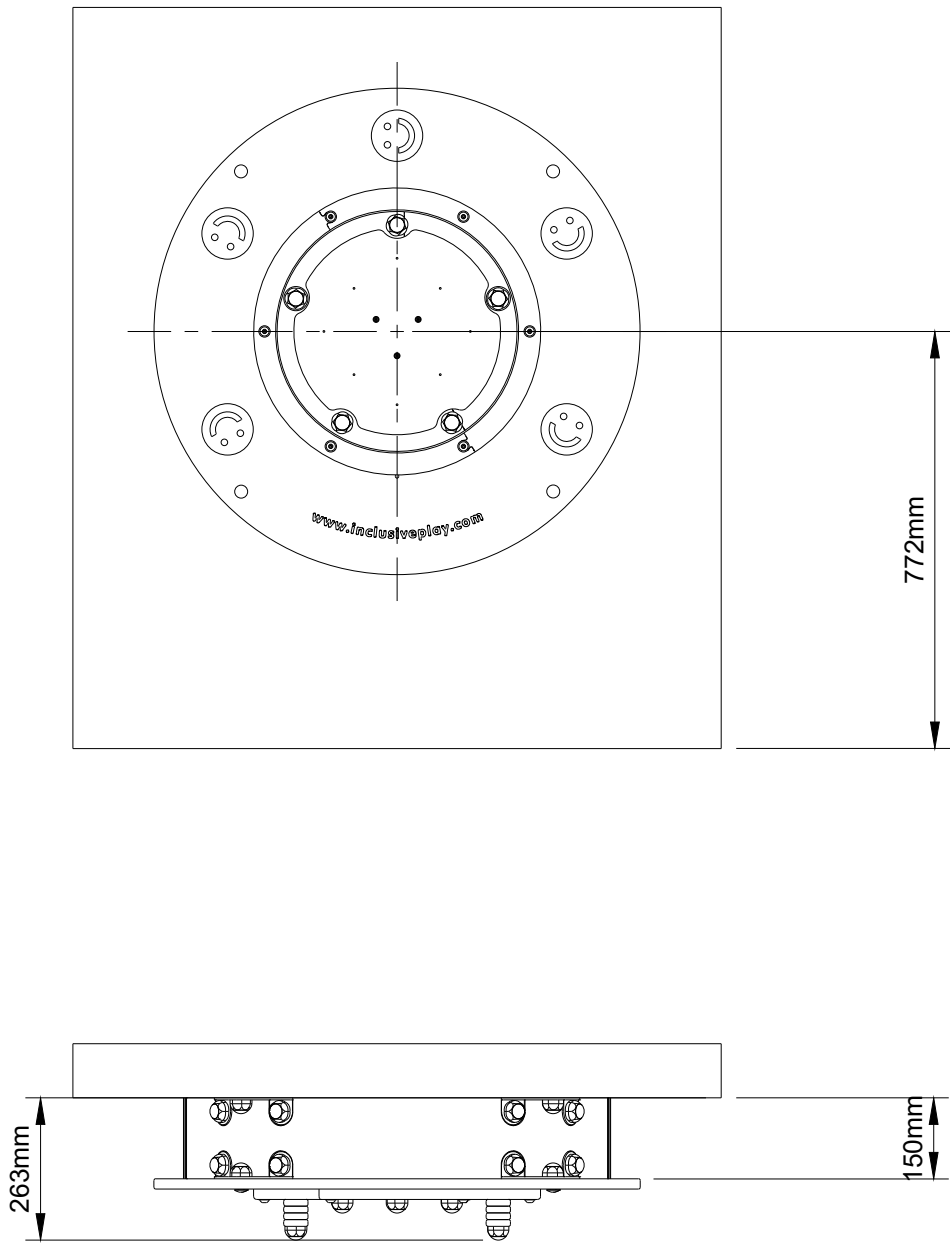


Drill 4 x 78mm holes.
This will allow the Microsphere to be placed securely on the mounted surface.



Make sure the mounted surface is level and flat, this will create a secure fit when attaching the Microsphere onto the mounted surface.

Installation Sheet for IP19 - Microsphere



Installation Sheet for IP19 - Microsphere

FOOTING DETAIL

Free Fall Height	N/A
Wetpour QTY (M²)	None Required
Grassmat QTY (mat - 1.5m²)	1 Mat for Wear Pad
Loosefill (m²)	None Required

