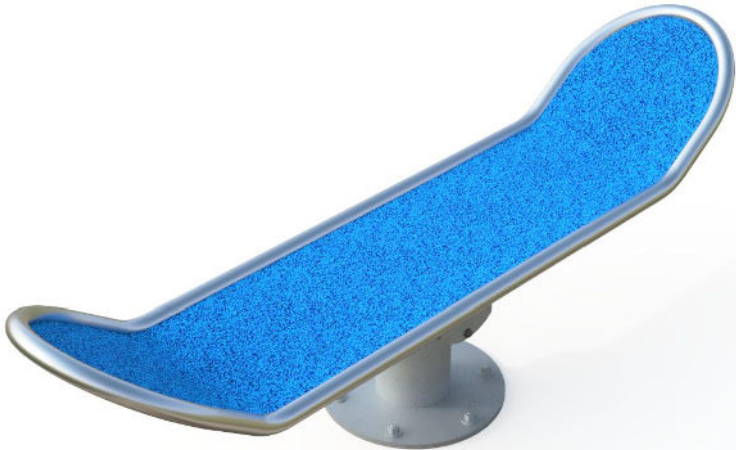


Installation Sheet for IP16 Surfboard



Product Name	Surfboard
Product Code	IP16
Document Release Date	18.08.2021
Document Rev	1
Total Install Hours	4 Hours
Volume of Concrete Required	0.6m ³

Installation Sheet for IP16 - Surfboard

TIMELINE OVERVIEW



Two people are required for the installation.

Day One - 3 hours

Excavate to 820mm x 760mm x 980mm. See page 3. This is for the ground anchor support and cement.

Place a slab or similar hard standing base into the bottom of the excavated hole. Ensure this is level.

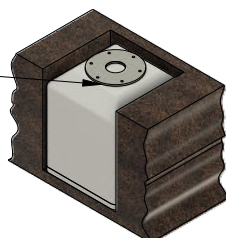
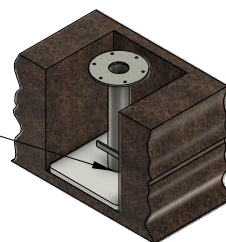
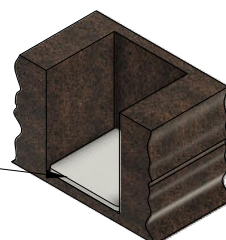
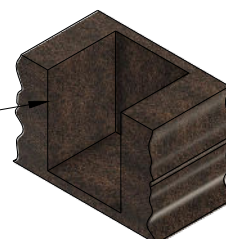
Position ground anchors in place. See page 4. Ensure the ground anchor is level.

Pour cement into the excavated hole, making sure the ground anchor is fully immersed into the cement, leaving only the steel top plate exposed.

Do not cover any part of the steel top plate in cement.

A total of 0.6m³ is required of cement.

Leave cement to set.

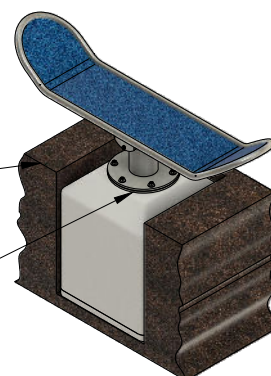


Day Two - 1 hour

When cement is set, place the product on top of the metal plate and bolt on securely. See page 6. Ensure there are no sharp corners of the cement exposed. Ensure unit functions without breaking away from the installed foundations.



Check product is level and secure.



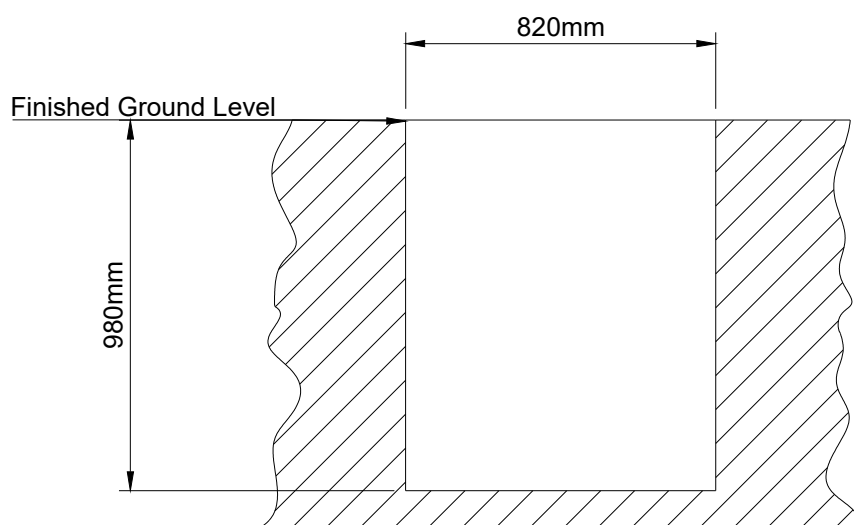
Call us +44(0)131 214 1180

www.inclusiveplay.com

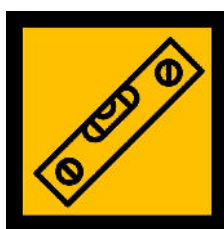
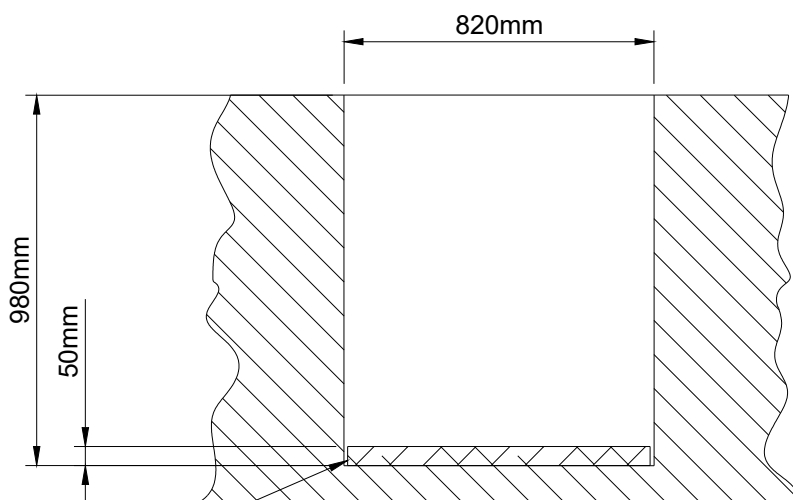
info@inclusiveplay.com

Installation Sheet for IP16 - Surfboard

Within the allocated space excavate
820mm x 760mm x 980mm.



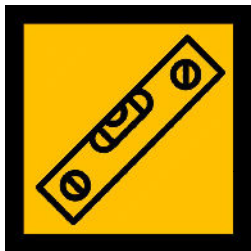
Place a slab or similar hard
standing base into the bottom of
the excavated hole. Ensure this
is level.



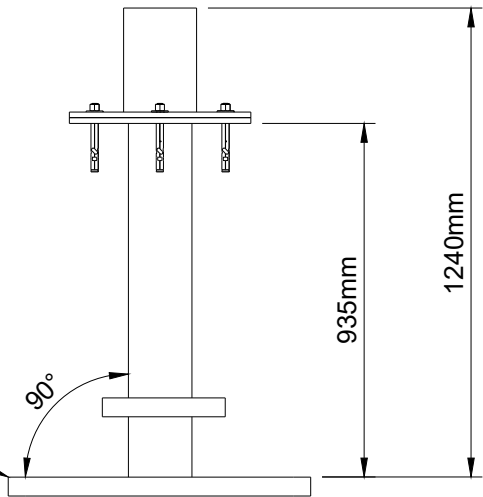
CHECK SPIRIT LEVEL

Securing the Ground Anchor

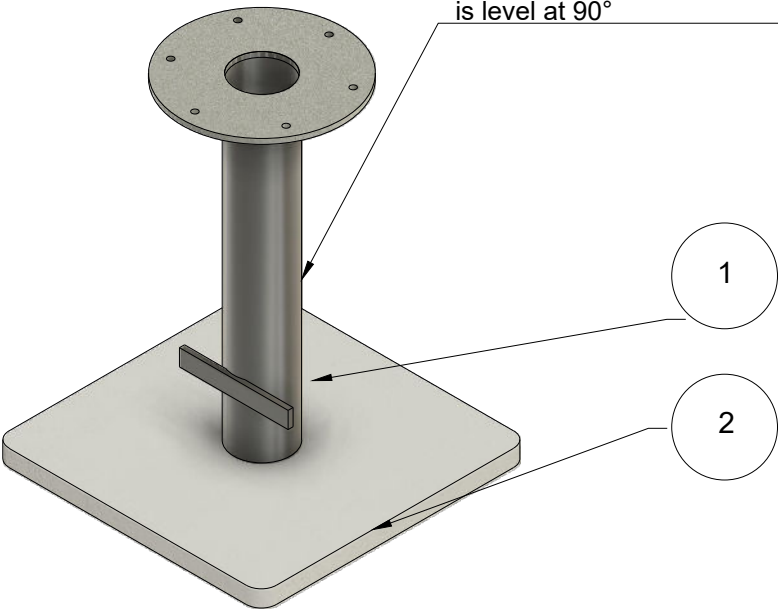
Please follow these instructions as closely as possible to ensure a sound installation of the unit.



Check Level



Place the Ground Anchor on to the level Concrete Base and wedge into position. Ensure the Ground Anchor is level at 90°

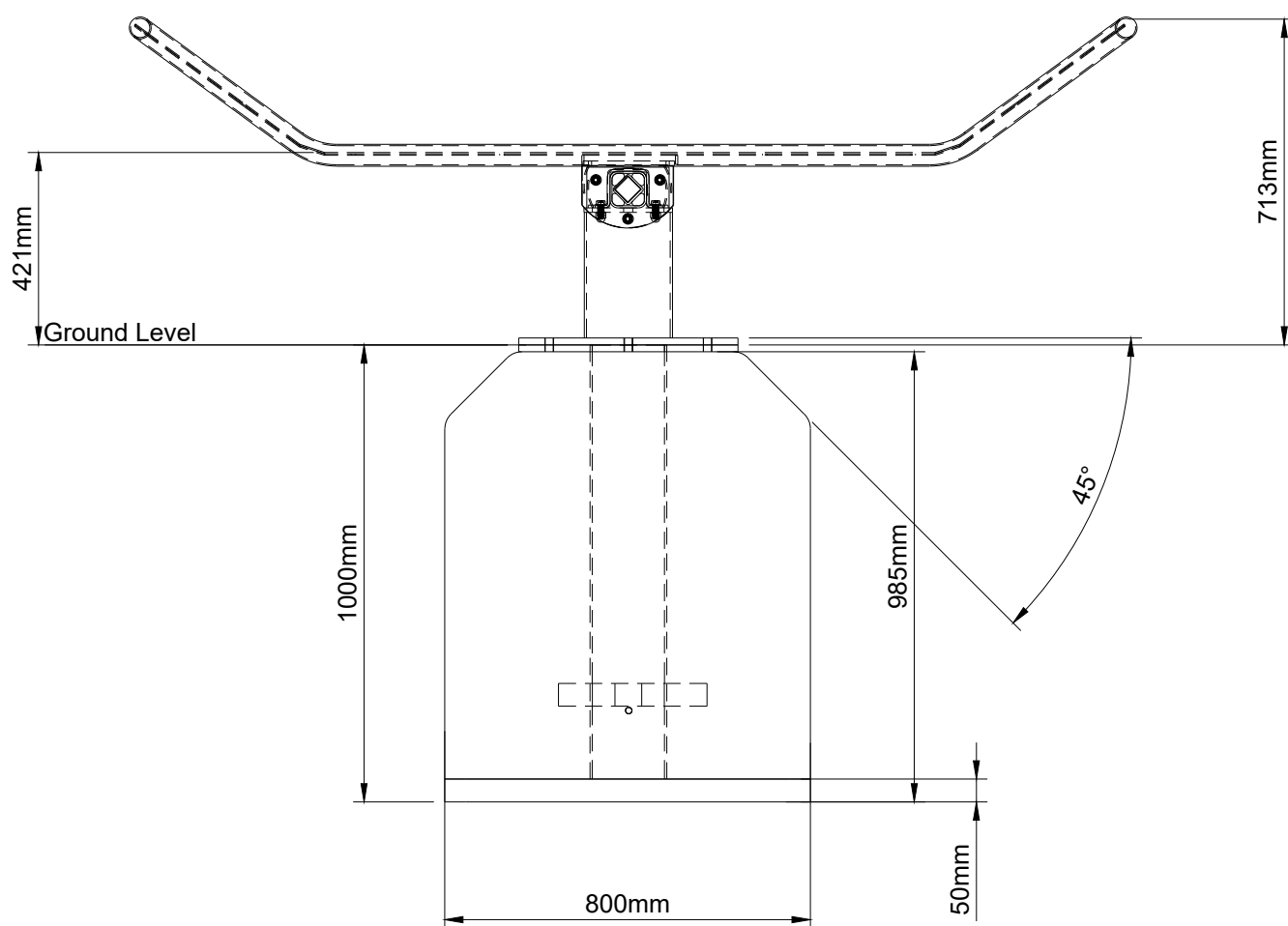


PARTS LIST		
ITEM NO	DESCRIPTION	QTY
1	Ground Anchor	1
2	Concrete Base Required	1



Installation Sheet for IP16 - Surfboard

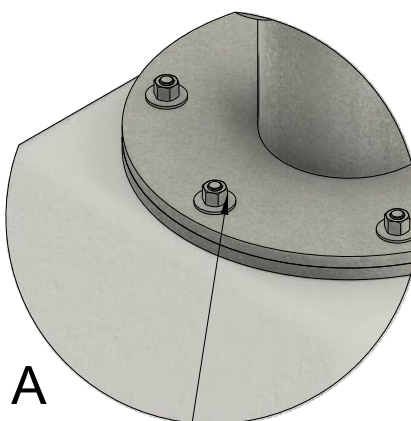
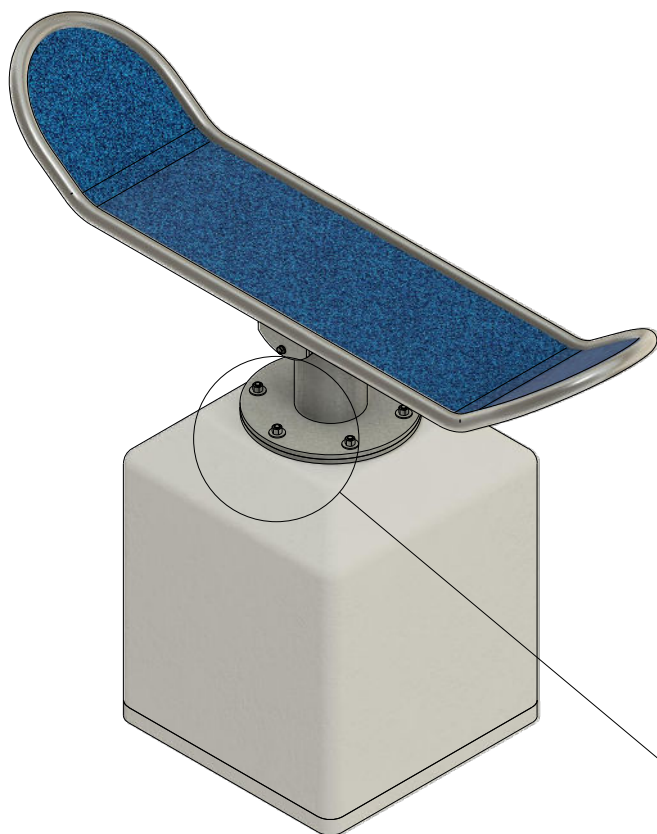
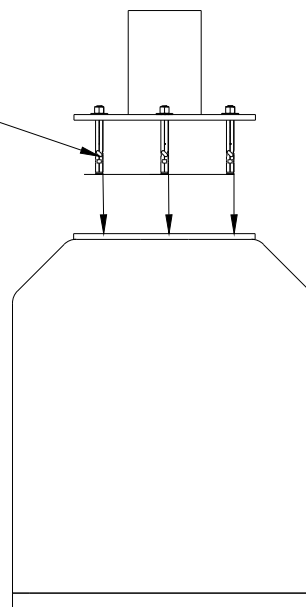
Detail View



Installation Sheet for IP16 - Surfboard

FIXINGS DETAIL

To secure the Surfboard to the ground anchor use the 6 x M18 Stud Bolts provided.



A

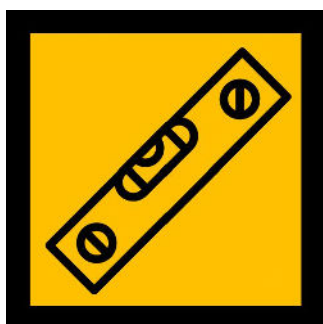
M18 Ground Anchor Stud Bolt X6

These bolts will secure the top section of the Surfboard to the ground anchor.

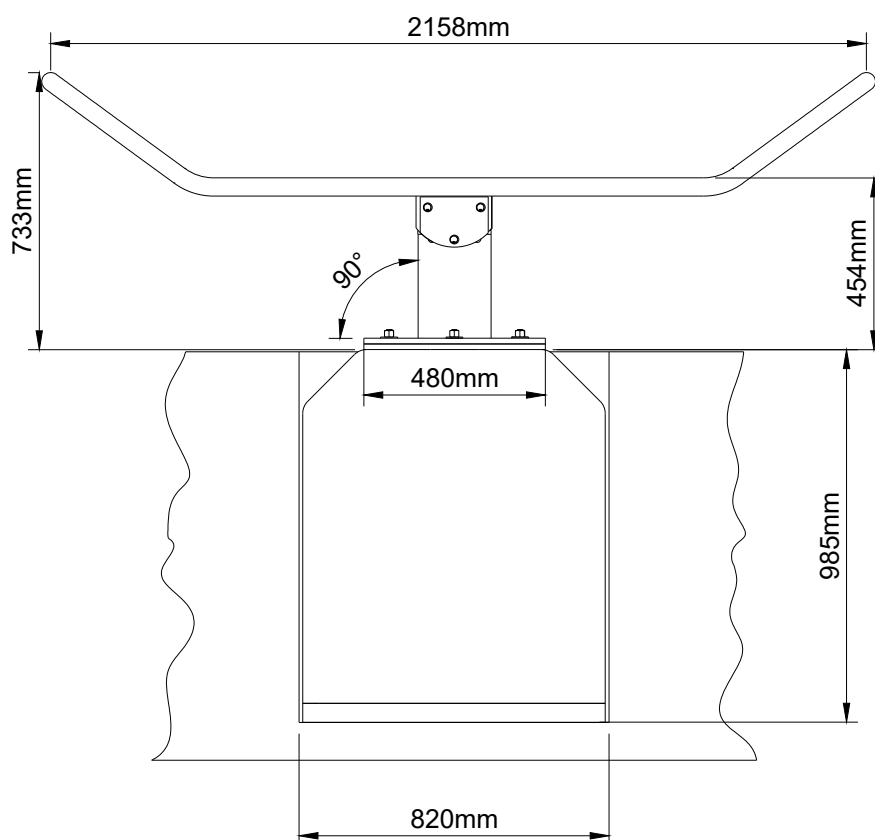


Installation Sheet for IP16 - Surfboard

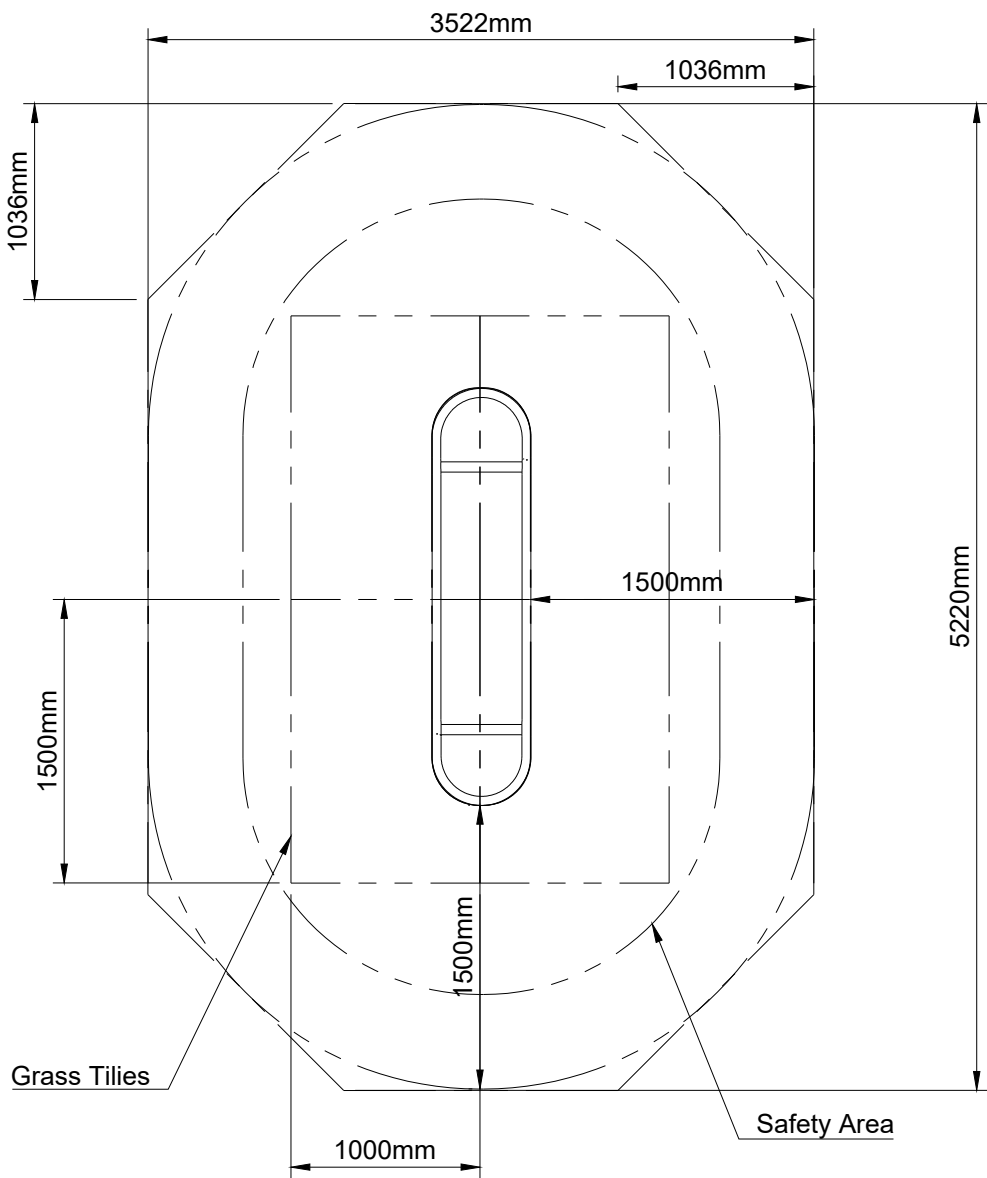
Only when the cement is set ensure all fixings are tight and secure before making good the surface by packing down any gaps with the surface material.



Check to ensure the installed unit is level.



SAFETY SURFACING DETAILS



Safety Surfacing Area	m ²
Wetpour Circle	16.7m ²
Wetpour Octagon	16.7m ²
Grass Tiles	4