

Installation Sheet for IP01 - Revolve



Product Name	Revolve
Product Code	IP01
Document Release Date	21/09/2021
Document Rev	1.0
Total Install Hours	5 Hours
Cement Required	0.48m³

Installation Sheet for IP01 - Revolve

TIMELINE OVERVIEW



Two people are required for this installation.

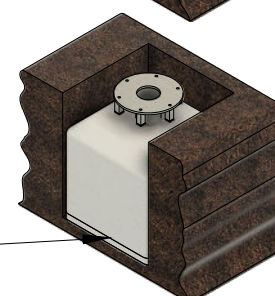
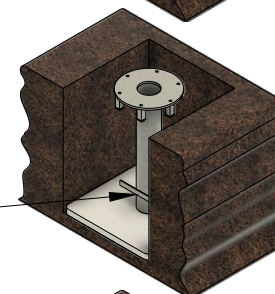
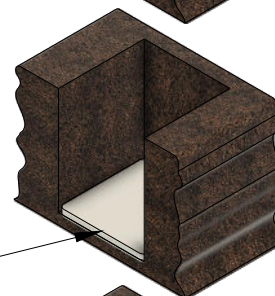
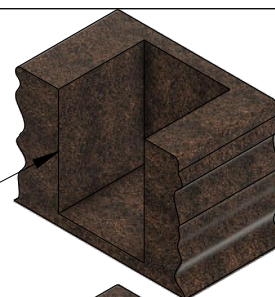
DAY ONE - 3 HOURS

Excavate to 800mm x 800mm x 1005mm. See page 3. This is for the ground anchor support and cement.

Place a slab or similar hard standing base into the bottom of the excavated hole. Ensure this is level.

Position the ground anchor in place. See page 4. Ensure the ground anchor is level

Pour cement into the excavated hole, making sure that the inground support structure is fully immersed into the cement, leaving only the ground anchor plate and box section exposed. A total of 0.48m³ is required of cement.

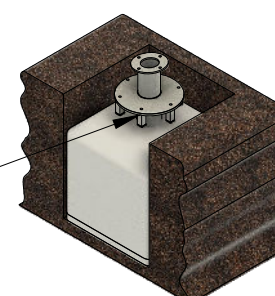


DAY TWO - 2 HOURS

When cement is set, place the angle/bearing housing on to the ground anchor. Bolt in place to create a secure fit. This section allows the Revolve to be positioned at the required 5° angle.

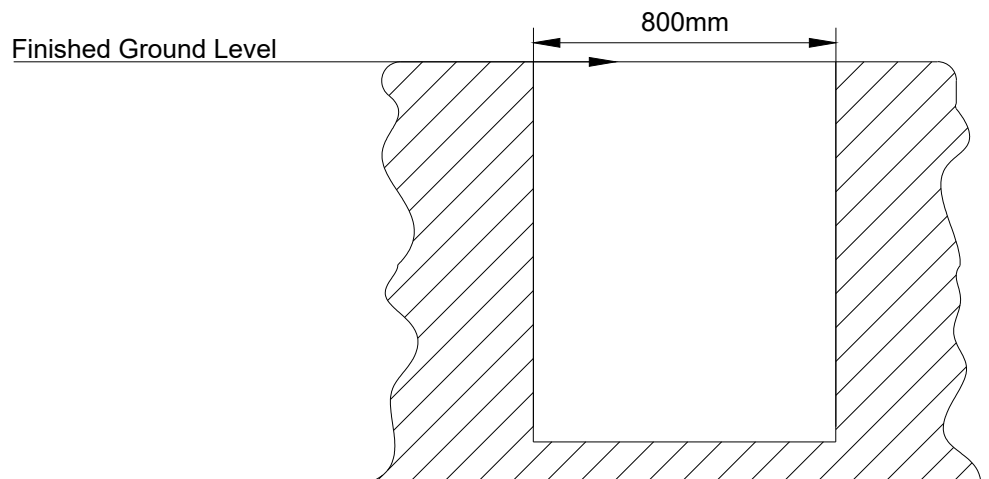
Position the Revolve in place and secure in place with the fixings provided.

Ensure there are no sharp corners of the cement exposed. Ensure unit functions without breaking away from the installed foundations.



Installation Sheet for IP01 - Revolve

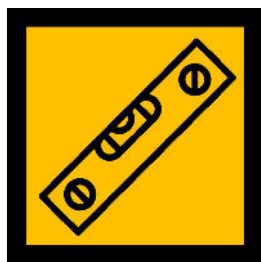
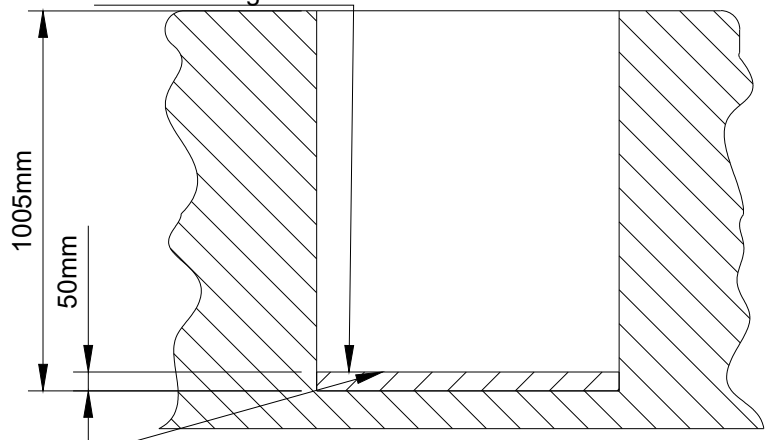
Within the allocated space excavate 800mm x 800mm x 1005mm.



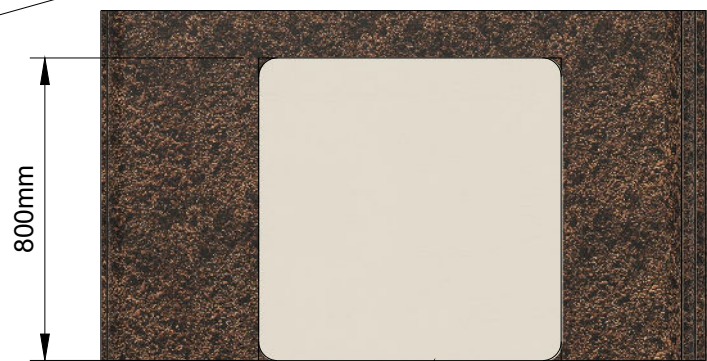
Place a slab or similar hard standing base into the bottom of the excavated hole. Ensure this is level.



Hard Standing Base



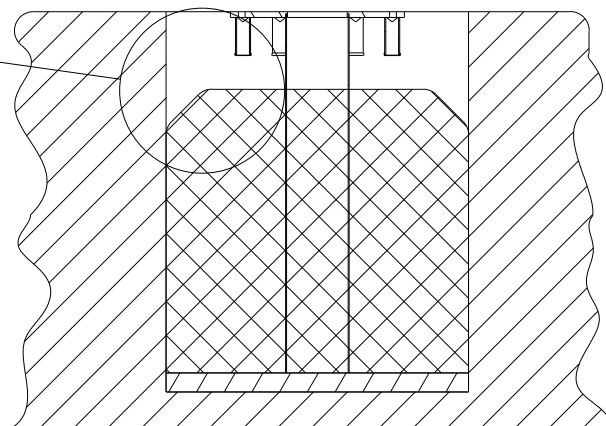
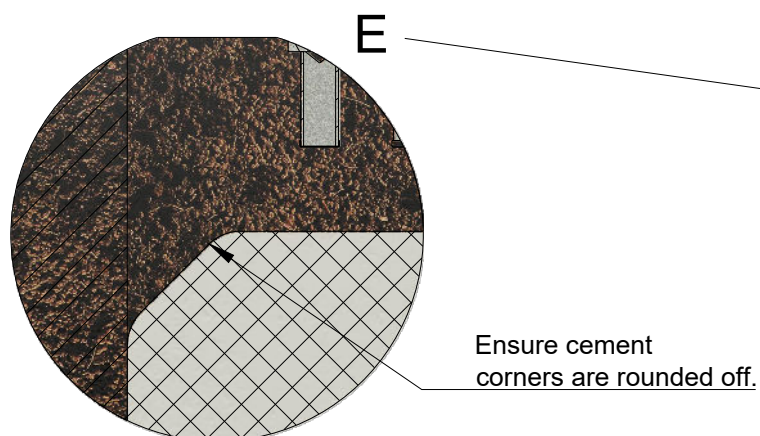
CHECK SPIRIT LEVEL



Hard Standing Base



Installation Sheet for IP01 - Revolve

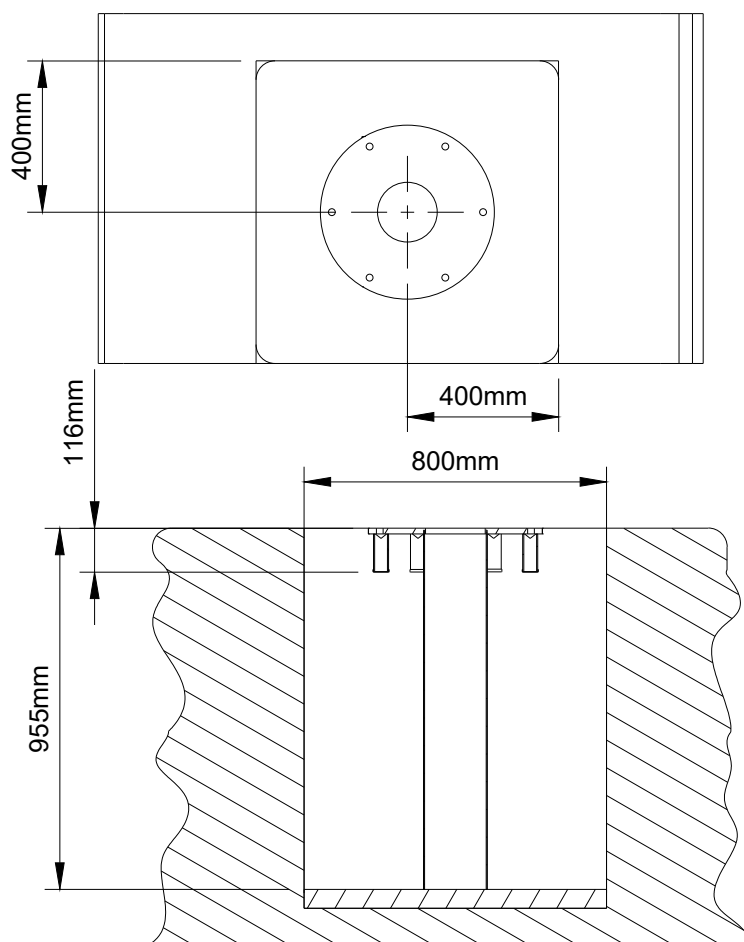


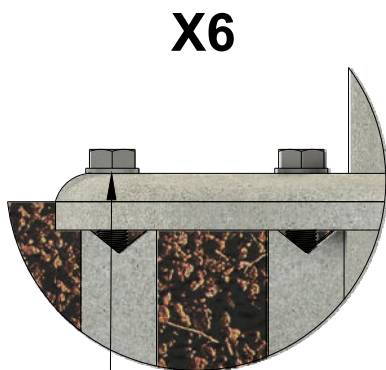
0.48 m³ cement volume required.

Fill to 1005mm deep and check Ground Anchors are level making small adjustments where required before the cement sets.

Ensure cement corners are rounded off.

Before pouring cement check the levels of the ground anchors ensuring they are straight and level.





F

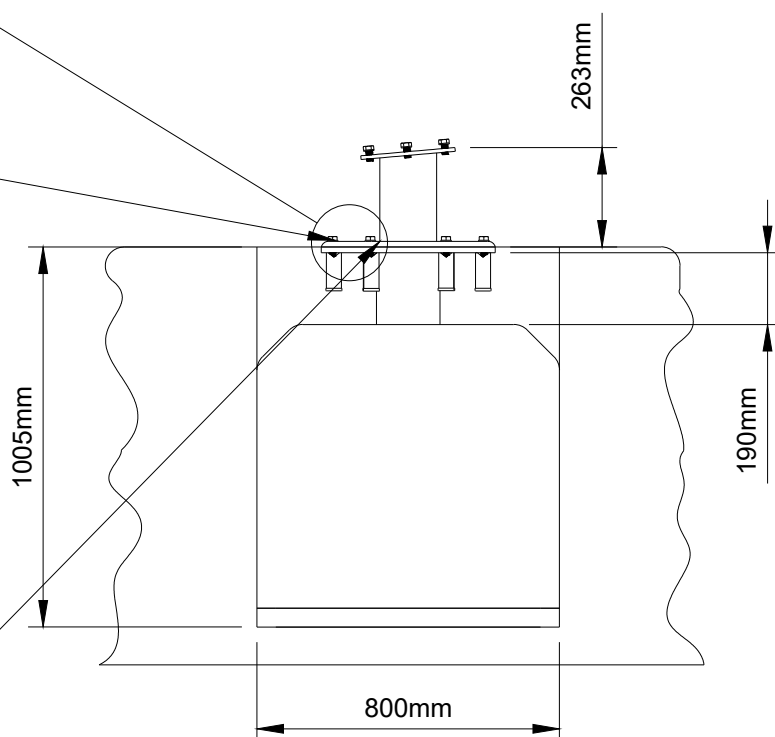
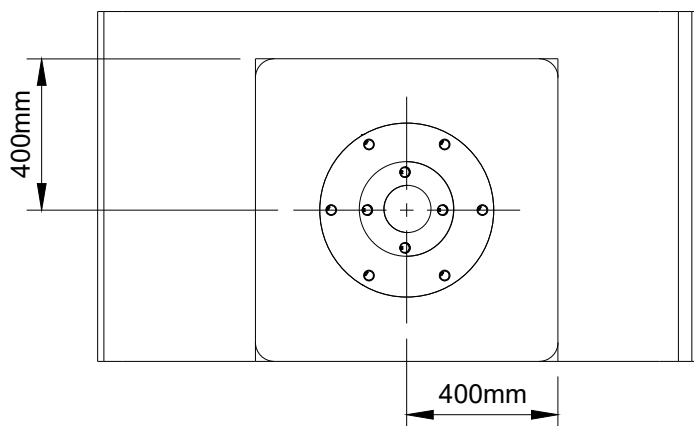


Loctite grade 2700

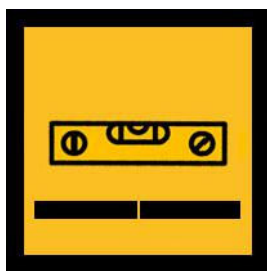
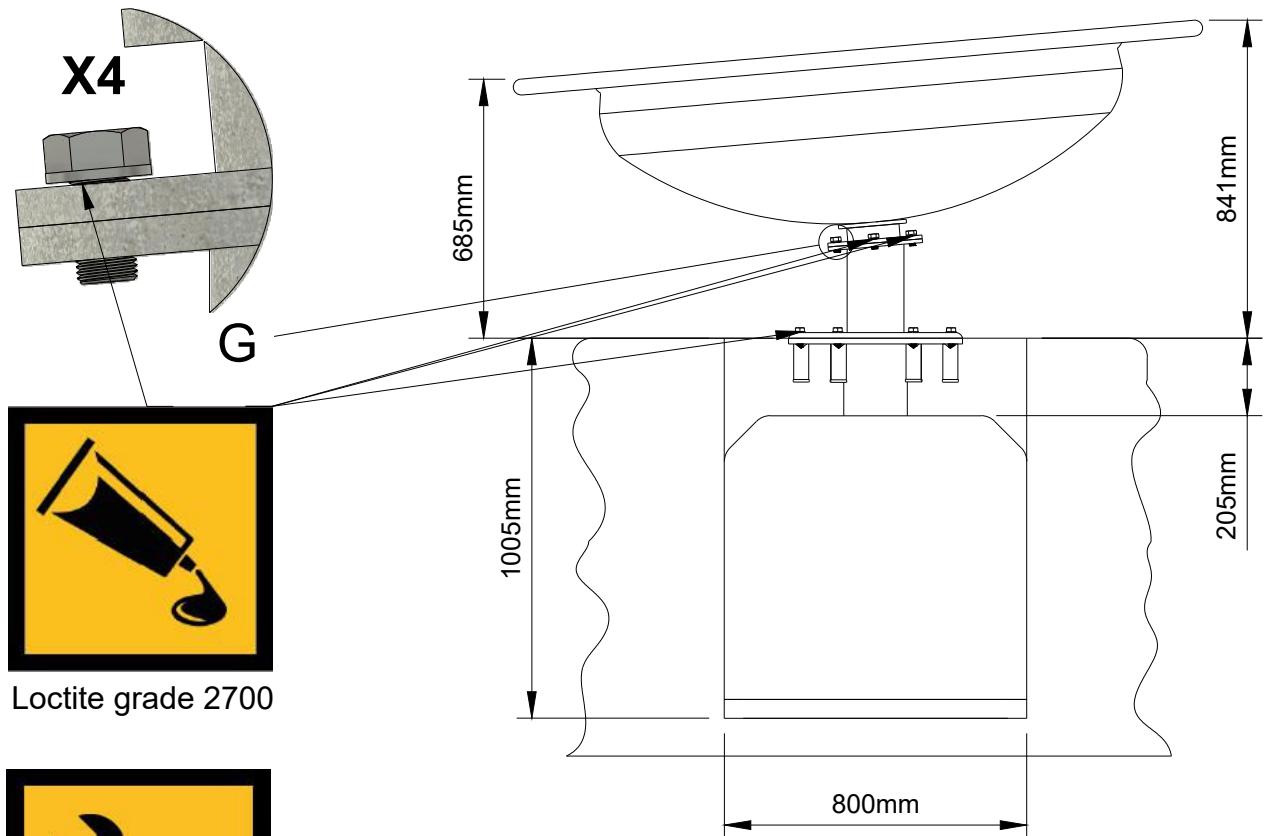
Bolt the neck section
on top the ground
anchor, creating the
required 5° angle.



CHECK SPIRIT LEVEL



Installation Sheet for IP01 - Revolve



**CHECK THE
INSTALLED UNIT
IS LEVEL**

Only when the cement is set, ensure all fixings are tight and secure before making good the surface by packing down any gaps with the surface material.

Finished unit should be at an angle of 5°

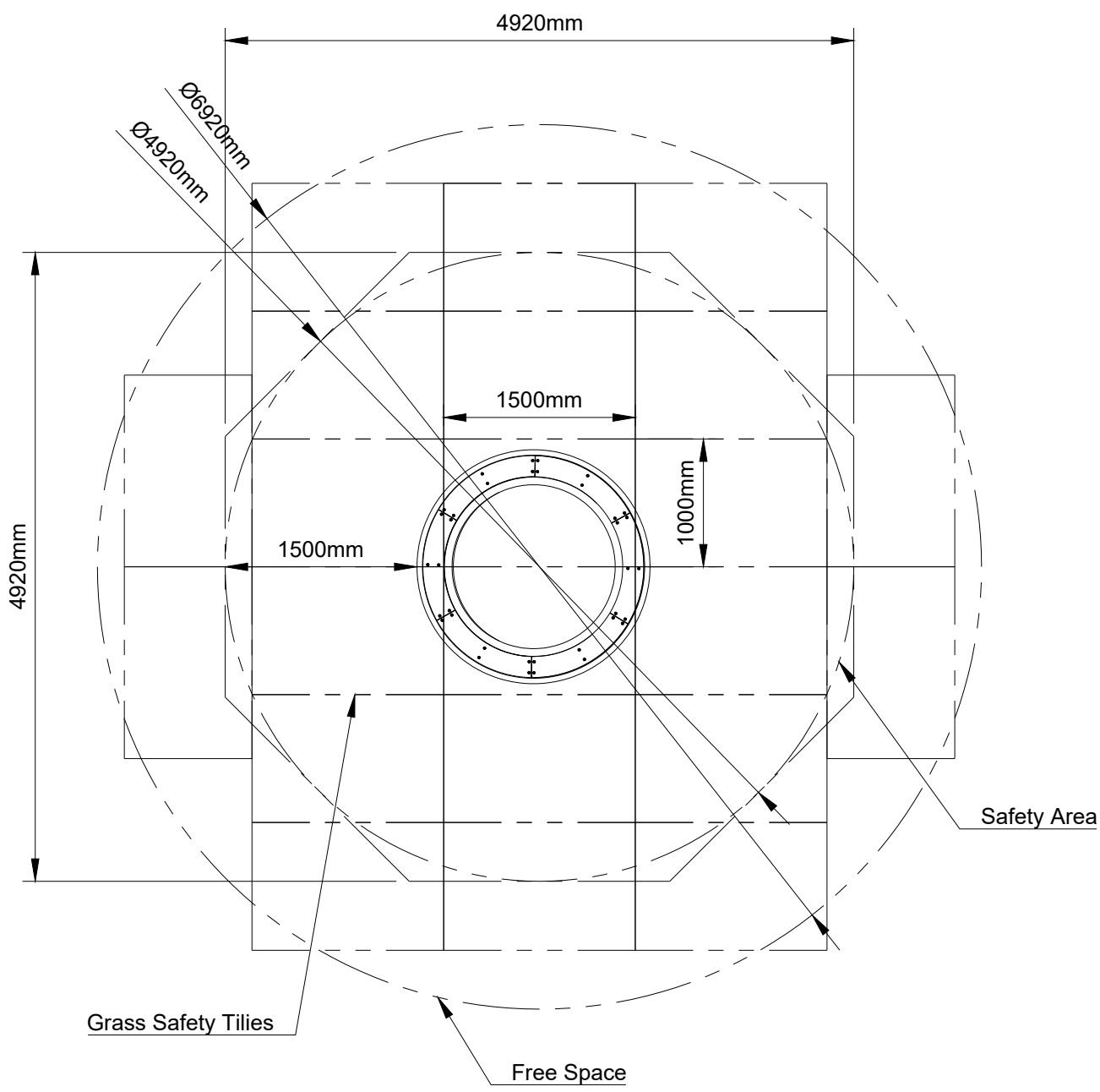


Call us +44(0)131 214 1180

www.inclusiveplay.com

info@inclusiveplay.com

Installation Sheet for IP01 - Revolve



Area	M ²
Safety Area	18.6m ²
Grass Safety Tiles	22

